



REDFINING RELIABILITY

CONVENTIONAL MARKING SOLUTIONS

THE COMPANY

Bradma: Pioneering Marking & Traceability Solutions Since the 1960s

As a part of Forbes & Company Ltd., under the industrial and construction conglomerate - Shapoorji Pallonji Group, Bradma has been at the forefront of innovation in marking and traceability solutions for over six decades. Our expertise spans across diverse industries, including Automotive, Defence, Railways, Heavy Engineering, and Pharma.



With a legacy of continuous improvement, Bradma delivers end-to-end marking solutions from component to chassis marking in the Engineering & Automotive sectors. Bradma expanded its product portfolio into Traceability solution offerings for finished goods in the Renewable Energy components and Pharma industries. Our solutions are designed to evolve with industry needs, ensuring unmatched precision, reliability, and adaptability across a wide range of applications, including industrial 4.0 solutions.

Our latest offerings in the marking and traceability segment are peer marking and laser SPM's for industrial automation.



Vision

To be a solution provider to customers using technologies in the field of Marking & Traceability solutions, Industrial Automation & Industry



Quality Policy

We commit ourselves to provide customer solutions by delivering innovative products in the field of marking traceability & industrial automation through continual improvement by active participation of our employees.

We remain committed toward environment and statutory compliances



Mission

- To inculcate an innovation led organizational culture to be a front runner in the field of technology
- To add value to the customers' business while adhering to our core values of QDP: Quality, Price, Delivery & the 5C's: Convenience, Comfort, Care, Commitment and Customer Satisfaction (Customer Delight)
- To develop a strong inhouse Design & Development skillset to enhance the quality of solutions
- To establish the cost leadership through world class manufacturing and operational excellence
- To be accountable towards the interest of all stakeholders, environment & society at large through all our actions and decisions.

IST / STAMPMARK / HHP



IST



Stampmark



HHP

HOLDERS / ROTARY NUMERATORS / PNEUMATIC GUN



Holders



Rotary Numerators



Pneumatic Gun

TABLE MARKING MACHINE / ROLL MARKING MACHINE / IMPACT PRESS



Impact Press



Label Marking Machine



Roll Marking Machine

WHY MARK

Accurate & Legible Part Nos. Model Nos. etc. Facilitate replacement and repairs.

Clear Easy to Read Patent Numbers
Protect against infringement.

Easy Identification

Quality Advertise Trade

Permanent Indentation

Uniform Marking Suggests

MARKING REGULATION NEED

Part Numbers

Graduations

Date Code

Serial Numbers

Batch Number

Instructions to User

Size

Material Code

Name Plate Details

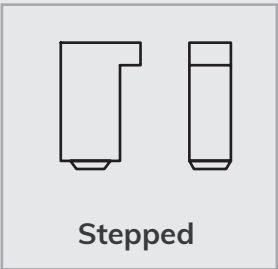
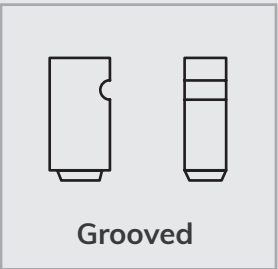
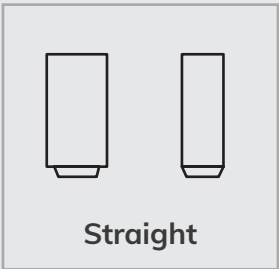
Model Identification

Inspector's Code

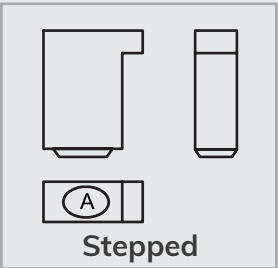
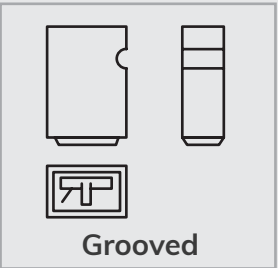
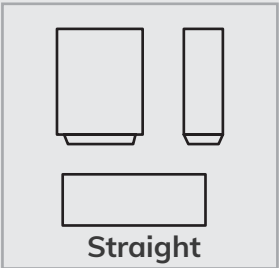
HOLDING METHODS

RECTANGULAR - BODY BASED

Types



Stamp Marks
(Composite Types)



STANDARD MACHINE OFFERINGS

**INTERCHANGEABLE
STEEL TYPES**

01

**SPL INTERCHANGEABLE
STEEL TYPES**

02

**BRADMA CUSTOMIZED
STAMP MARK**

03

**BRADMA
SPL HOT STAMPS**

04

**BRADMA
HOLDER TYPES**

05

**BRADMA
HAND HELD PUNCHES**

06

ROTARY NUMERATORS

07

**AUTOMATIC ROTARY
NUMERATOR**

08

IMPACT PRESS

09

**METAL LABEL
MARKING MACHINE**

10

**ROLL MARKING
MACHINE**

11

**PNEUMATIC MARKING
MACHINE**

12

**HYDRAULIC ROLL
MARKING MACHINE**

13

INTERCHANGEABLE STEEL TYPES



- ▶ Steel Types which can be composed like Printer's Types.
- ▶ Manufactured from high-quality steel types.
- ▶ Hardened and tempered to ensure: Toughness & Wear resistance
- ▶ Plated for superior rust resistance
- ▶ Character Accurately Positioned on Shank.
- ▶ Uniform depth and controlled overall length for consistency
- ▶ Easy to compose and rearrange as needed .
- ▶ Compatible with holders for both hand and machine operation

FEATURES

Suitable for part numbering, batch & date coding, etc. on Steels, Casting, Forgings, Aluminium, Brass, Plastics and Paper.

Types made from high quality tool steel

Letters and Numbers formed by unique Cold forming process for longer tool life

Dull Nickel plated for rust free longer shelf life.

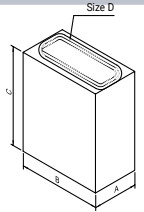
Bevel Angles, Character Depth & "Bradma" Calligraphy to maximize type life

Sets are available with or without holder.

All dimensions are to very close tolerances, for the clearest uniform impression in perfect alignment

STANDARD FONT SETS

Alpha-Numeric Set - With OR Without Holder



BRADMA TYPE CODE NO.	CHARACTER SIZE D MM	TYPE SIZE			BRADMA FONT SET CODE NO.		NUMBER OF TYPES IN SET	NUMBER OF SPACERS SET	BRADMA HAND HOLDER CODE	BRADMA HAND HOLDER CAPACITY
		A MM	B MM	C MM	WITH HAND HOLDER	WITHOUT HAND HOLDER				
T 010	1	1	8	25	112BH010	112B010	100	12	8 H 20	20
T 062	1.59 (1/16")	1.59	3.18	15.88	112BH062	112B062	100	12	125H750	12
T 020	2	2	8	25	112BH020	112B020	100	12	8 H 25	12
T 093	2.40 (3/32")	2.4	6.35	19.05	112BH093	112B093	100	12	250H1000	10
T 030	3	3	8	25	112BH030	112B030	100	12	8H25	8
T 125	3.18 (1/8")	3.18	6.35	19.05	112BH125	112B125	100	12	250H1250	10
T 040	4	4	8	25	112BH040	112B040	100	12	8H40	10
T 187	4.76 (3/16")	4.76	7.94	19.05	112BH187	112B187	100	12	312H1250	6
T 050	5	5	8	25	112BH050	112B050	100	12	8H40	8
T 060	6	6	8	25	112BH060	112B060	100	12	8H40	6
T 250*	6.35 (1/4")	6.35	9.53	19.05	112BH250	112B250	100	12	375H1500	6
T 080*	8	8	14	25	66BH080	66B080	60	6	14H60	7
T 375*	9.53(3/8")	9.53	15.88	25.4	66BH375	66B375	60	6	625H2250	6
T 100*	10	10	14	25	66BH100	66B100	60	6	14H60	6
T160*	16	12	20	30	-	-	-	-	-	-

Items with codes marked as * are made to order

Number Set Without Holder

BRADMA TYPE CODE NO.	CHARACTER SIZE D MM	TYPE SIZE			BRADMA FONT SET CODE NO.	NUMBER OF TYPES IN SET	NUMBER OF SPACERS SET
		A MM	B MM	C MM			
T 062	1.59 (1/16")	1.59	3.18	15.88	56 BN 062	50	6
T 020	2	2	8	25	56 BN 020	50	6
T 093	2.40 (3/32)	2.4	6.35	19.05	56 BN 093	50	6
T 030	3	3	8	25	56 BN 030	50	6
T 125	3.18 (1/18")	3.18	6.35	19.05	56 BN 125	50	6

APPLICATIONS

Nameplate Marking

Aerospace & Defense Part Marking

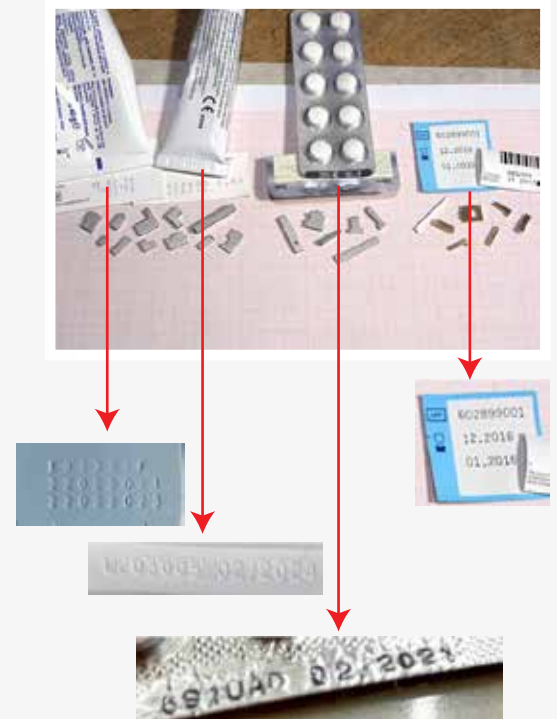
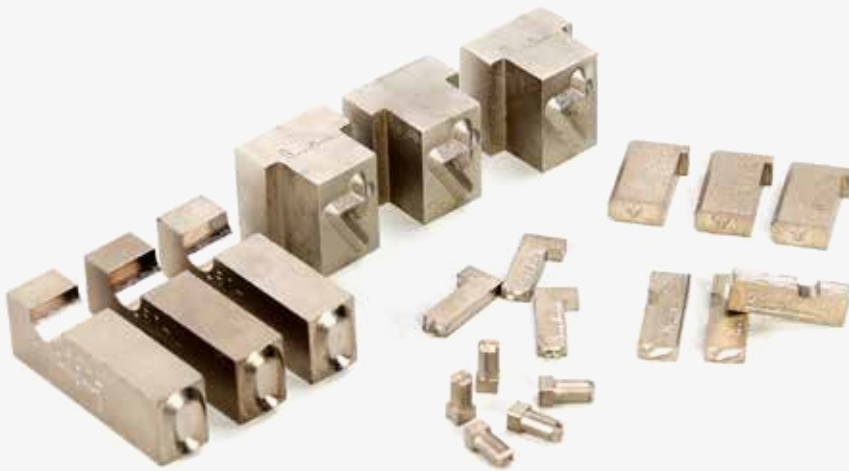
Tool & Die Marking

Metal Cable Tag Production

Automotive Component Identification

Electrical Panel Tag Marking

SPL INTERCHANGEABLE STEEL TYPES



Special Types – Custom Development Available Based on Conditions

- ▶ Calligraphy and character sizes must fall within our standard range
- ▶ Custom calligraphy is available upon request
- ▶ Minimum order quantities must be met
- ▶ The design must be compatible with our type forming process

FEATURES

Segmental, Radial, Grooved and Stepped Types for special applications

Low stress types

Concave or Convex Types

Types with special calligraphy design

Types for hot stamping applications

Special Types for Packing, Cartonators, Collapsible Tubes, Crimping, Sachets, Tetra packs etc STANDARD FONT SETS



Blister Marking



Crimping



Tetra Packs



Rectangular Through Holed



T - Shape



I - Shape



L - Shape



Grooved



L - Shape Segmental



Grooved Crimping



Round



L - Shape



Z - Shape



Rectangular Grooved



Grooved



Grooved



Double Grooved



Extra Long Round



Extra Long Grooved



Concave



Extra Long

APPLICATIONS

High-precision Part Marking

Special Font / Character Marking

Logo and Symbol Stamping

Inspection Code Stamping

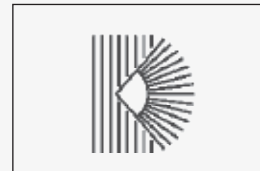
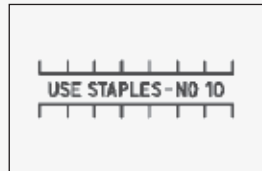
Defense & Aerospace Component Marking

High-hardness Metal Marking

BRADMA CUSTOMIZED STAMP MARK



SINGLE LINE



- ▶ Bradma offers customized stamping solutions for reliable marking on industrial parts, machinery components, tools, and even currency coins

- ▶ Marks are created using a metal stamp die with a press or hammer, delivering permanent identification that endures wear and harsh environments

FEATURES

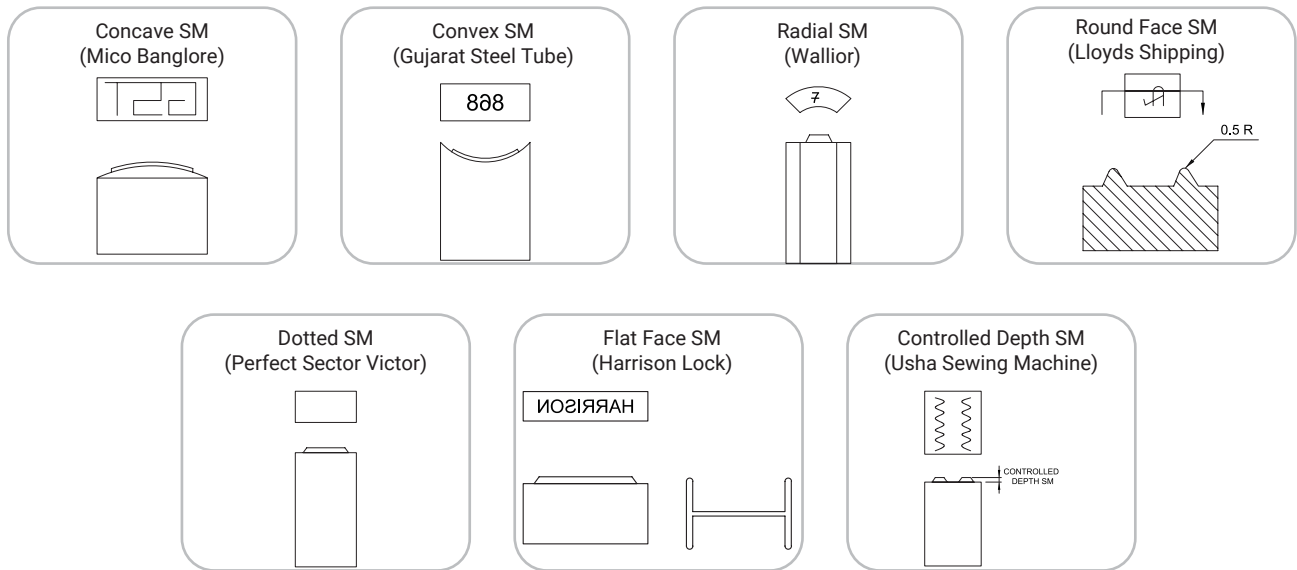
Bradma stamp marks are deeply imprinted into the material, making them resistant to wear, corrosion, and tampering.

Suitable for a wide range of metals including stainless steel, brass, copper, aluminum, etc.

Ideal for traceability and long-term identification.

Can be customized for soft and hard metals using different dies and pressure settings.

STAMP MARK TYPES



BOLD



DOUBLE LINE



APPLICATIONS

Tool Identification

Batch Marking on Forgings

Serial Number Stamping

Industrial Product Branding

Logo and Brand Marking

Component Identification

BRADMA SPL HOT STAMPS



- ▶ Hot stamp marks are identification or traceability markings applied to metal components while they are still hot, typically during or immediately after forging or heat treatment processes.
- ▶ These marks are crucial in foundries, steel industry, railway, oil & gas and forging industries to ensure part traceability, quality control, and compliance with industry standards.

- ▶ Hot stamp marks are imprinted alphanumeric characters, logos, or codes created by pressing or stamping a die into the hot surface of a metal part. The metal is soft and malleable at elevated temperatures, making it easier to embed permanent marks.

FEATURES

Withstands heat, corrosion, and wear throughout the product life.

Easily readable even after surface treatment

Applied when the metal is hot (~600°C–1100°C) without compromising integrity

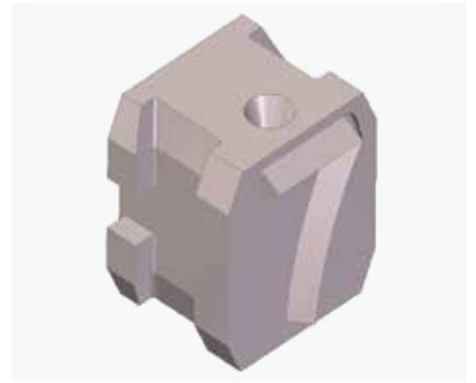
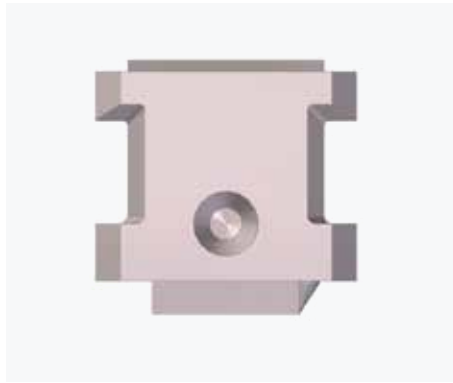
The permanent indentation created by hot stamping makes the mark tamper-proof and durable, ideal for secure and lasting identification.

Useful for root-cause analysis, recalls, and batch management

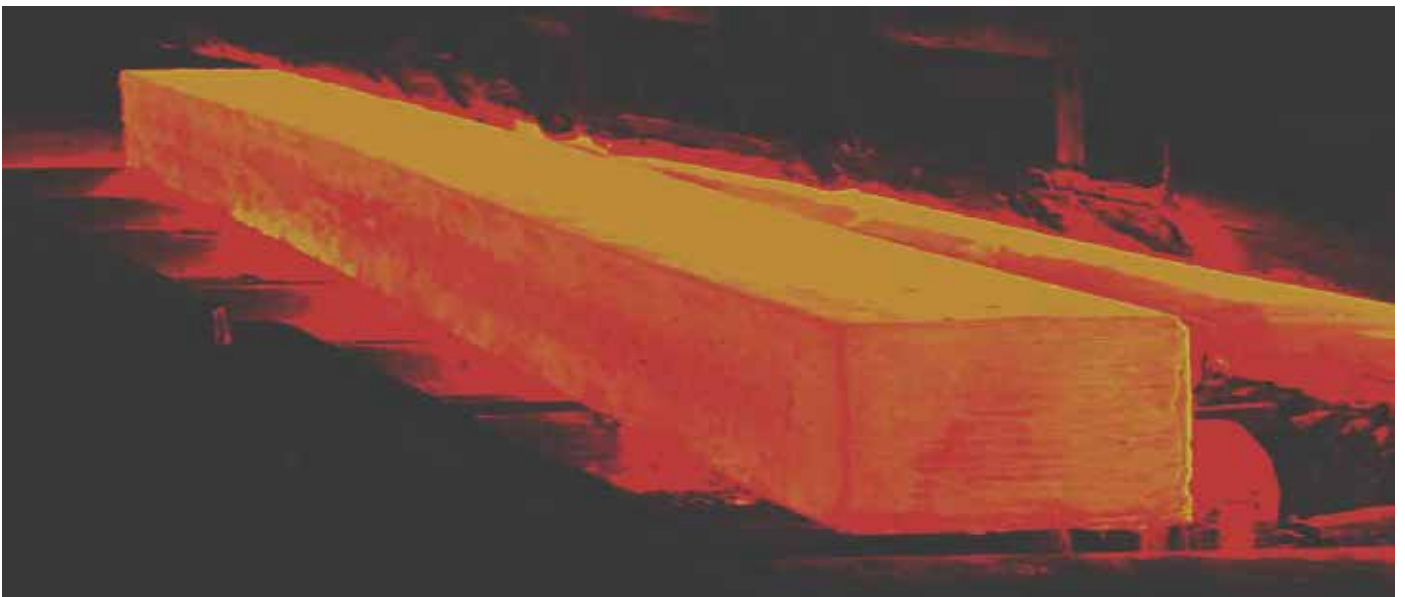
Dies can be customized to include specific logos, alphanumeric codes, or dates

Can be done using manual hammers, pneumatic hot stamp presses, or automated robotic marking systems.

HOT PUNCH



- ▶ Suitable for surface temperature upto 900°C
- ▶ Special punch material suitable for high temperature



APPLICATIONS

Marking gear knobs (Automotive)

Labels (Packaging)

Dashboards (Automotive)

Batch numbers (Industrial Components)

Foil stamping on boxes (Packaging)

Model numbers (Industrial Components)

BRADMA HOLDER TYPES



► BRADMA are metallic holding tools designed to securely house a set of BRADMA Steel Types & stamp marks. These holders are then struck manually or used in a press to transfer the desired character combination onto a workpiece.

► They are ideal for serial numbers, heat codes, batch numbers, dates, logos, or custom texts.

TYPES OF HOLDERS



Hand Holder



Press Machine Holder



HHP Holder



Roll Marking Machine Holder

FEATURES

Made from heat-treated alloy steel for long life.

Available in various sizes – single row, double row, or multi-row for multiple characters.

Can be made for custom character height, width, and pitch.

Precision slotting holds the steel types firmly in place during stamping.

Suitable for hand hammering, pneumatic presses, or hydraulic stamping machines.

Can be used to mark hot surfaces (in forges) or cold components.

Easy character interchangeability means fast changes without retooling.

HAND HOLDER CAPACITY

HAND HOLDER BRADMA CODE NO.	1	1.59 (1/6")	2	2.4 (3/32")	3	3.18 (1/8")	4	4.76 (3/16")	5	6	6.35 (1/4")	8	9.53 (3/8")	10
8 H 20	20		10		6		5							
8 H 25			12		8		6		5	4				
8 H 40					13		10		8	6				
14 H 60												7		6
125 H 750		12												
250 H 1000				10										
250 H 1250				13		10								
312 H 1250								6						
375 H 1500														
625 H 1500											6			
250 H 2L 1000		24*											6	

MACHINE HOLDER CAPACITY

MACHINE HOLDER BRADMA CODE NO.	1	1.59 (1/6")	2	2.40 (3/32")	3	3.18 (1/8")	4	4.76 (3/16")	5	6	6.35 (1/4")
8 M 20	20		10		6		5				
8 M 40	40		20		13		10		8	6	
8 M 60					20		15		12	10	
8 M 80					26		20		16	13	
125 M 1000		16									
125 M 2000		32									
250 M 1000				10		8					
250 M 2000				21		16		10			
250 M 3000				32		24					
312 M 3000											
375 M 2000											8
375 M 3000											12

ROLL MARKING MACHINE HOLDER CAPACITY

ROLL MARKING MACHINE HOLDER BRADMA CODE NO.	1	1.59 (1/6")	2	2.40 (3/32")	3	3.18 (1/8")	4
8 R 10 20	20		10		6		5
8 R 10 40	40		20		13		10
R R 10 60			30		20		15
125 R 10 1000		16					
125 R 10 2000		32					
250 R 10 1000				10		8	
250 R 10 2000				20		16	
250 R 102 L 1000		*24					
250 R 102 L 2000		*56					

HHP HOLDERS

HHP Holders
HHP HOLDER FOR HHP 1, 1.6 & 2mm
HHP HOLDER FOR HHP 3 & 4mm
HHP HOLDER FOR HHP 5 & 6mm
HHP HOLDER FOR HHP 8 & 10mm
HHP HOLDER FOR HHP 12mm
HHP HOLDER FOR HHP 16 & 25mm

BRADMA HAND HELD PUNCHES



- ▶ BRADMA hand held punches are precision-engineered manual marking tools used for direct part marking on metal and other hard materials. These punches are commonly used in industrial environments like foundries, forging shops, tool rooms, workshops, and maintenance departments for permanent marking of parts.

- ▶ BRADMA hand held punches are single or multiple character hardened steel tools (alphabets, numerals, or symbols) that are struck by a hammer to make an indentation or mark on the surface of a component.

FEATURES

Manufactured from hardened alloy steel for durability and long life.

Sharp and consistent character depth for clear legibility.

Comes in different character heights (1mm to 10mm or more).

Punch tips are hardened and tempered to withstand repeated hammer blows.

Available in standard sets (A-Z, 0-9) or custom logos/symbols.

Requires no electricity or machinery – simple and cost-effective.

HAND PUNCH SETS

CHARACTER SIZE MM	ALPHA SET A TO Z BRADMA CODE NO.	NUMBER SET 0 TO BRADMA CODE NO.
1.6	26HHP 062	9HHP 062
2	26HHP 020	9 HHP 020
2.4 (3/32")*	26HHP093*	9 HHP 093*
3	26HHP030	9 HHP 030
3.148 (1/8")*	26HHP125*	9 HHP125*
4	26HHP040	9 HHP040
5	26HHP050	9 HHP050
6	26HHP060	9 HHP060
6.35 (1/4")*	26HHP250*	9 HHP 250*
8	26HHP 080	9 HHP 080
9.53 (3/8")*	26HHP375*	9 HHP375*
10	26HHP100	9HHP100
12	26HHP120	9HHP120
12.7 (1/2")*	26HHP500*	9HHP500*
16*	26HHP160*	9HHP160*
20*	26HHP200*	9HHP200*

Note:

Items marked as (*) are Made to Order
Alpha Sets of 27HHP are also available
on request for all the sizes with Character
"&" included in the set.

LOW STRESS PUNCHES



INSPECTION PUNCHES



APPLICATIONS

Manual Part Stamping

Lock and Key Marking

Tool and Die Marking

Tag Marking

Serial Number Punching

Maintenance Coding

ROTARY NUMERATORS



- ▶ A Rotary Numerator is a wheel-based marking device that contains rotating number wheels (usually 0–9). Each wheel can be manually or automatically indexed to form different number combinations (e.g., 001, 002, 003...). These devices are used to impress numbers into the surface of metal parts using impact or press force.

- ▶ They are ideal for serial numbering, batch coding, date stamping, or shift identification.

FEATURES

Typically 3 to 10 wheels depending on required digit length.

Can be rotated by hand (manual) or indexed automatically by machine after each marking.

Made from high-grade, hardened tool steel.

Precision engraving ensures consistent and readable numbers.

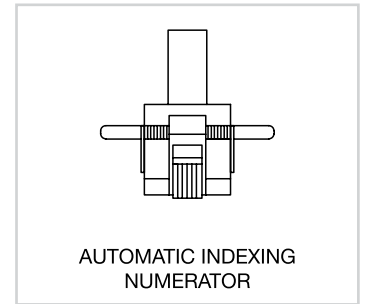
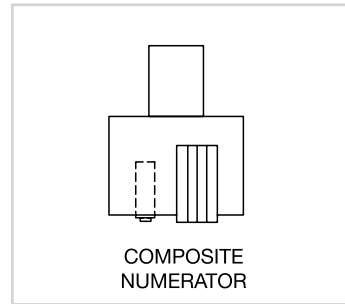
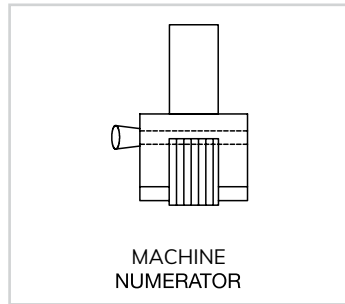
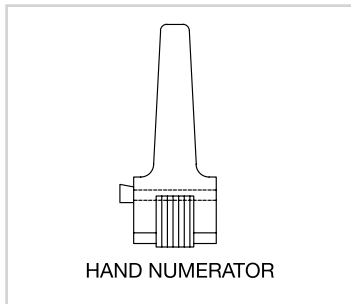
Wheels can include letters, logos, or special characters if needed.

Can be integrated into presses, marking machines, or automated production lines.

Suitable for use on hot forgings or cold metal surfaces.

NUMERATOR TYPES

Size Developed - 2,3,4 & 5 mm | 6 RTN2, 6RTN3, 6HN4, 5YHN5



Wheel Configuration

- ▶ 0 to 9 Numerals
- ▶ Special Configuration Consisting of Alphas can be offered.

New improved Design is being introduced for 4 mm to 5 mm sizes.

- ▶ Each Wheel can be indexed separately without disturbing adjacent Wheels
- ▶ Indexing pin does not fall out
- ▶ Better Hand Grip
- ▶ Rugged Body

SPECIAL ROTARY TYPE NUMERATORS

BRADMA RTN CODE NO. WITH HAND HOLDER	BRADMA RTN CODE NO. WITH MACHINE HOLDER	CHARACTER SIZE MM	CHARACTER SPACING MM	NO. OF WHEELS 0-9	MARKED LENGTH
6RTN 2	6RTN 2M	2	2	6	11.2
6RTN 3	6RTN 3M	3	3	6	16.8
6RTN 3	6RTN 4M	4	4	6	22.4
7RTN 4*	7RTN 4M*	4	4	7	26.4
5RTN 5*	5RTN 5M*	5	5	5	23
6RTN 5*	6RTN 5M*	5	5	6	28

APPLICATIONS

Batch Number Stamping

Nameplate Numbering

Manual Serial Number Marking

Part ID Coding

Tool Identification

Tag Serialization

AUTOMATIC ROTARY NUMERATOR



► An Automatic Rotary Numerator is a mechanical marking device designed to automatically advance the number wheels after each marking stroke. It is used for sequential and permanent numbering of components, typically in mass production environments like forgings, foundries, automotive, aerospace, and tool manufacturing.

- It consists of multiple number wheels (0–9) that rotate automatically after each mark. When a part is stamped (manually or via a press), the internal mechanism indexes the wheels, so the next number is ready without manual adjustment.
- It's like a mechanical version of a digital counter – but for permanent impact or hot stamping directly on metal!

FEATURES

Increments the numeric value automatically after each impression.

Made of hardened tool steel, suitable for rough industrial use.

Perfect for repetitive marking – no manual setting needed.

Quick reset option to go back to “0000”.

Available in 3 to 10 digits depending on your marking needs.

Can be used in hand presses, hydraulic presses, or integrated with automation lines.

Can be used for hot forging marking (with heat-resistant specs).

Some models allow inclusion of alphabets or logos in custom wheels.

ARN CODES

BRADMA ARN CODE NO.	CHARACTER SIZE MM	CHARACTER SPACING MM	NO. OF WHEELS 0-9	MARKED LENGTH
6AN062	1.6	1.6	6	8.96
6AN020	2	2	6	11.2
6AN030	3	3	6	16.8
6AN040	4	4	6	22.4
6AN050	5	5	6	28
6AN060	6	6	6	33.6
6AN080	8	8	6	44.8
7AN062	1.6	1.6	7	10.56
7AN020	2	2	7	13.2
7AN030	3	3	7	19.8
7AN040	4	4	7	26.4
7AN050	5	5	7	33
8AN020	2	2	8	15.2
8AN030	3	3	8	22.8
8AN040	4	4	8	30.4
8AN050	5	5	8	38
8AN060	6	6	8	45.6
9AN020	2	2	9	17.2
9AN030	3	3	9	25.8
9AN040	4	4	9	34.4
9AN050	5	5	9	43
10AN062	1.6	1.6	10	15.36
10AN020	2	2	10	19.2
10AN030	3	3	10	28.8
10AN040	4	4	10	38.4
10AN050	5	5	10	48
11AN030	3	3	11	31.8

APPLICATIONS

Automatic Serial Numbering

Electrical Tag Numbering

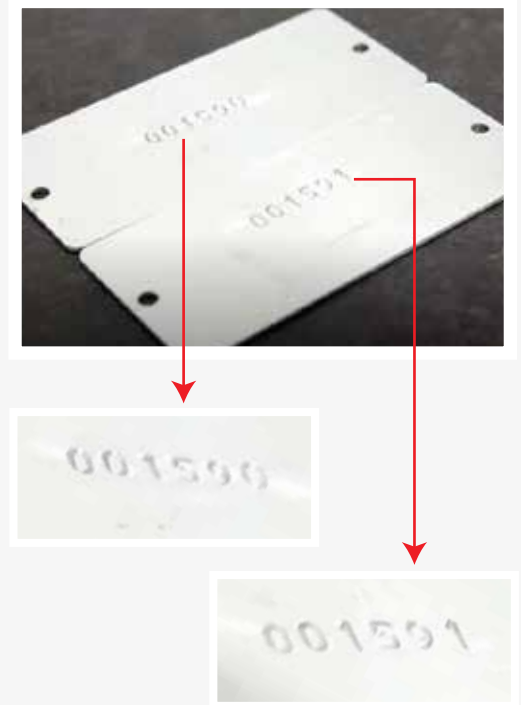
High-speed Batch Marking

Assembly Line Marking

Engine/Component Coding

Sequential Number Stamping

IMPACT PRESS



- ▶ An Impact Press is a mechanical press machine used for performing operations such as marking, embossing, riveting, staking, punching, bending, and coining through a high-speed impact force generated mechanically or pneumatically.

- ▶ An Impact Press delivers a controlled, high-force impact to a workpiece in a precise and repeatable manner. The press uses a spring-loaded or cam mechanism to accumulate energy and release it instantly, creating a powerful downward stroke – much like a hammer blow but with much more control, safety, and accuracy.

FEATURES

Delivers strong impact force ranging from a few hundred to several thousand kilograms.

Adjustable stroke depth and force ensures precision.

Mechanical models do not require electricity or pneumatics.

Can be installed on benches and integrated into automation lines.

Marking, assembling, piercing, stamping, and more.

Two-hand safety operation or foot pedal options.

SPECIFICATION

	IP28PN	IP28H
CAPACITY	2.5 T	2.8 T
DAYLIGHT	273 mm	273 mm
THROAT	140 mm	140 mm
TABLE SIZE	160 X 160 mm	160 X 160 mm
COLUMN	60 mm dia	60 mm dia
COLLET	10 mm	10 mm
AIR LINE PRESSURE	5 kg / sq cm	--
NETT WEIGHT	60 kg	55 kg

PNEUMATIC GUN



ON MATERIAL	LETTER HEIGHT	NO OF LETTERS	MARKING DEPTH	ANGLE 90 DEGREE
M.S.	2mm	4	0.1 to 0.21mm	90°
M.S.	3mm	2	0.1 to 0.2mm	90°
M.S.	4mm	1	0.1 to 0.13mm	90°
S.S.	2mm	4	0.1 to 0.2mm	90°
S.S.	3mm	2	0.1 to 0.2mm	90°
S.S.	4mm	1	0.1 to 0.13mm	90°
Aluminium	2mm	4	0.2 to 0.5mm	90°
Aluminium	3mm	2	0.2 to 0.4mm	90°
Aluminium	4mm	1	0.3 to 0.4mm	90°

APPLICATIONS

Nameplate Marking

Interchangeable Type Marking

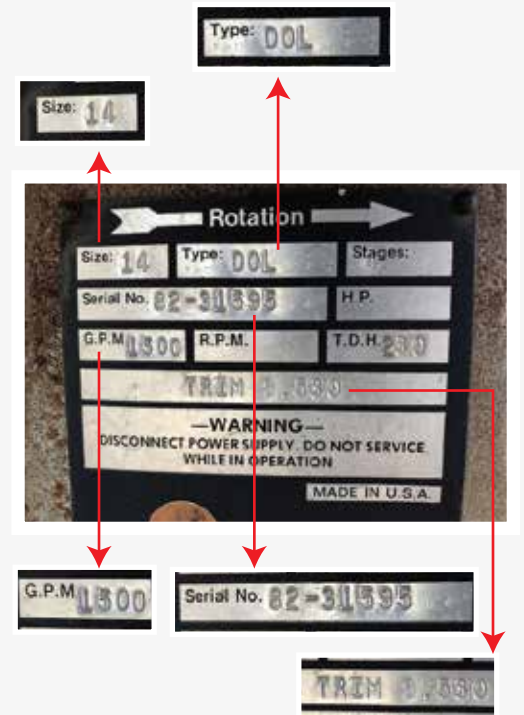
Logo Stamping

Rotary Numerator Operations

Serial Number Embossing

Tag and Component Marking

METAL LABEL MARKING MACHINE



- ▶ A Metal Label Marking Machine is a specialized device used to permanently mark information on metal labels or nameplates. These machines are commonly used in industrial settings where durable, legible, and tamper-proof identification is required.

- ▶ A Metal Label Marking Machine is designed to engrave, etch, emboss, or indent information like: Serial numbers, Part numbers, Equipment details, Barcodes or QR codes, Logos, Batch numbers & Safety warnings onto metallic nameplates or tags, typically made from stainless steel, aluminum, brass, or anodized metal.

FEATURES

Delivers long-lasting, non-erasable marks resistant to heat, corrosion, and abrasion.

Compatible with stainless steel, aluminum, brass, anodized metal, and coated plates.

Easily mark serial numbers, batch codes, part numbers

Produces clear, sharp, and legible text and symbols – critical for traceability and compliance.

Control indentation depth for surface or deep engraving, based on the metal type and use case.

Engineered for tough industrial conditions with minimal maintenance.

Fast loading/unloading of plates for higher productivity.

Allows marking in different languages, fonts, and sizes for diverse labeling requirements.

BASIC 5-STEP OPERATION

1. Simply set for marking depth.
2. Locate label on marking table.
3. Rotate dial wheel to select the character to be marked.
4. Depress operating handle to mark label.
5. Release operating handle - and the table automatically advances the label to the next marking position.

SPECIFICATIONS

LABEL CAPACITY	upto 100 mm deep and 200 mm wide
LABEL THICKNESS	0.3 mm to 2.5 mm 10 mm minimum and 95 mm maximum from top edge of label
MARKING LIMITS	10 mm minimum and 95 mm maximum from top edge of label
TABLE SIZE	240 X 90 mm
TABLE TRAVEL	125 mm from right to left
CHARACTERS ON DIAL WHEEL	A thru' Z
DIAL WHEEL	0 thru' 9 . - / &
NETT WEIGHT	15 kg.

BRADMA CODE	CHARACTER SIZE
LM 40/1.6	1.6 MM
LM 40/2	2 MM
LM 40/3	3 MM
LM 40/4	4 MM

APPLICATIONS

Industrial Equipment Tags

Asset Tracking Plates

Electrical Panel Labels

Tool and Mold ID Tags

Cable and Pipe Identification

Compliance & Safety Plates (ISO, CE, etc.)

ROLL MARKING MACHINE



- ▶ A Roll Marking Machine is a type of permanent marking equipment used to emboss or indent letters, numbers, logos, or other information onto cylindrical or round components by rolling them between a die and a support roller.
- ▶ It is especially useful for marking shafts, pipes, bars, and rods.
- ▶ A marking die with engraved characters is mounted on a rotating roll.
- ▶ The workpiece (round or cylindrical) is fed into the machine.
- ▶ The die rolls over the surface, pressing the characters into the material using mechanical force (hydraulic, pneumatic, or manual).
- ▶ As the die rotates, it continuously marks the component with consistent pressure and depth.

FEATURES

Designed specifically to mark round or cylindrical objects like shafts, rods, and tubes.

Uniform pressure ensures clear and consistent marks across the entire surface.

Dies can be customized with logos, serial numbers, batch numbers, and part numbers.

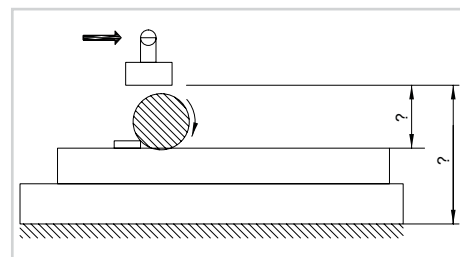
Can accommodate special fixtures to handle different sizes and shapes of components.

ACCESSORIES

Anvil, Roller Cradle, Stud Arbour, Type Holder.

ANVIL

Components to be marked can be placed either on the Anvil or directly on the Bed.



PRINCIPLE OF OPERATIONS

MODEL RH 10

MODEL RH 15

ROLLER CRADLE CODE NO.	USED FOR MARKING DIA. RANGING BETWEEN		USED FOR MARKING DIA. RANGING BETWEEN	
	MIN.	MAX.	MIN.	MAX.
RC 1	6 mm	20 mm	-	-
RC 2	12 mm	35 mm	-	-
RC 3	-	-	25 mm	55 mm



Roller Cradle



Stud Arbour for Hollow Objects

APPLICATIONS

Automotive components (axles, shafts, gear blanks)

Pipe and Tubing Industries

Steel Bars and Rods

Serial Numbers, Part Numbers, Logos

Aerospace Parts

PNEUMATIC MARKING MACHINE



- ▶ A Pneumatic Marking Machine is a specialized marking system that uses compressed air (pneumatics) to apply consistent force for marking round or cylindrical components. It is ideal for medium to high-volume production, providing deep, clear, and permanent impressions without damaging the workpiece.
- ▶ Compressed air activates a cylinder that applies pressure.
- ▶ The marking die (engraved roller) rolls over the rotating workpiece.
- ▶ The rolling action transfers the engraved text or symbols onto the component surface.
- ▶ It ensures uniform depth and high-speed marking.

FEATURES

Operates using compressed air for consistent and controlled marking force.

Eliminates the need for manual force, improving productivity and repeatability.

Uses a rotating die to emboss characters as it rolls over round or cylindrical components.

Ensures uniform marking depth across the full surface.

Quick cycle time makes it suitable for batch production and assembly lines.

Pressure regulators allow easy control of marking depth and pressure for different materials and components.

Can accommodate custom dies with alphanumeric characters, logos, or serial numbers.

Quick-change die holders for efficient operation.

Designed to mark shafts, pipes, rods, bushings, and other round parts.

Optional fixtures and supports to hold different part sizes securely.

Can be operated via foot switch for hands-free marking.

Option for automatic cycle triggering in production lines.

Built with a heavy-duty frame for industrial environments.

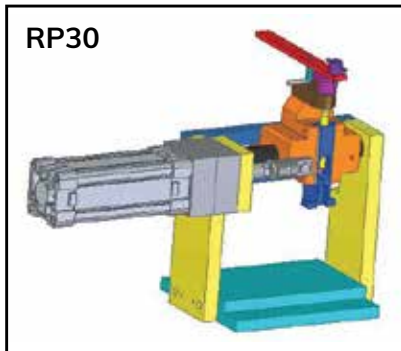
Long-lasting, reliable performance even in continuous operation.

Simple pneumatic components require minimal maintenance and are easy to service.

Available with safety guards, emergency stop buttons, and dual-hand controls for operator protection.

SPECIFICATIONS

MARKING CAPACITY	3 Lines of 3 mm Characters (In Mild Steel)
DIE SLIDE STROKE	75 mm
DAYLIGHT	200 mm
THROAT	90 mm
OPEN BACK	75 mm between uprights
OPEN DISTANCE	180 mm Between Up-Rights
OUTPUT	Upto 600 Nos. per hour depending on Length of stroke and of component
AIR CONSUMPTION	3 Litres / stroke
TABLE SIZE	250 X 200 mm.
TABLE SIZE	7 mm pneumatically, 160 mm by handwheel.
TABLE PRESSURE	1.5T at 5kg / sq cm line pressure
FLOOR AREA	700 X 400 mm
HEIGHT	720 mm
NET WEIGHT	240 kg



TONNAGE	MODEL NO	TOTAL TRAVEL MM	POWER STROKE MM
2 Tonnes	2T 2P 100 T 6PG	100	6
	2T 2P 150 T 6PG	150	6
	2T 4P 100 T 6PG	100	6
	2T 4P 150 T 6PG	150	6
	2T CF 100 T 6PG	100	6
	2T CF 150 T 6PG	150	6
	2T CCF 100 T 6PG	100	6
	2T CCF 150 T 6PG	150	6
4 Tonnes	4T 2P 100 T 6PG	100	6
	4T 2P 150 T 6PG	150	6
	4T 4P 100 T 6PG	100	6
	4T 4P 150 T 6PG	150	6
	4T CF 100 T 6PG	100	6
	4T CF 150 T 6PG	150	6
	4T CCF 100 T 6PG	100	6
	4T CCF 150 T 6PG	150	6
8 Tonnes	8T 2P 100 T 6PG	100	6
	8T 2P 150 T 6PG	150	6
	8T 4P 100 T 6PG	100	6
	8T 4P 150 T 6PG	150	6
	8T CF 100 T 6PG	100	6
	8T CF 150 T 6PG	150	6
	8T CCF 100 T 6PG	100	6
	8T CCF 150 T 6PG	150	6
15 Tonnes	15T 2P 100 T 6PG	100	6
	15T 2P 150 T 6PG	150	6
	15T 4P 100 T 6PG	100	6
	15T 4P 150 T 6PG	150	6
	15T CF 100 T 6PG	100	6
	15T CF 150 T 6PG	150	6
	15T CCF 100 T 6PG	100	6
	15T CCF 150 T 6PG	150	6

APPLICATIONS

Shafts, Rods, Pipes

Automotive, Railways, and Industrial Machinery Parts

Bearings and Axles

Logos, Serial Numbers, Batch Codes, Part Ids

HYDRAULIC ROLL MARKING MACHINE



- ▶ A Hydraulic Roll Marking Machine is a heavy-duty industrial machine designed to permanently emboss or indent markings (such as part numbers, logos, or serial codes) onto round or cylindrical metal components using hydraulic pressure.
- ▶ The die embosses or indents the information as it moves.
- ▶ It uses a rotating die that rolls over the surface of a component while applying high, consistent force through a hydraulic cylinder. This process ensures deep, clear, and uniform marks, even on hardened or large-diameter components.
- ▶ The process produces permanent and high-quality marks with minimal distortion.

FEATURES

Provides greater marking force (5 to 30+ tons), suitable for large or tough materials.

Ensures deep and consistent impressions on hard or thick components.

Capable of marking large shafts, tubes, gears, or forged parts.

Handles components with larger diameters and heavier weights than pneumatic machines.

Maintains uniform marking depth, even on hard materials.

Offers better control of force and pressure.

Allows installation of custom dies for part numbers, serial codes, or logos.

Built for 24/7 operation in tough environments like automotive, heavy engineering, and railway sectors.

Fine-tune marking depth using hydraulic pressure controls.

Can be paired with special fixtures or V-blocks to hold and rotate components during marking.

SPECIFICATIONS

Roll Marking Machine model	Operation	Die Slide Stroke (mm)	Vertical Movement (mm)	Max Daylight (Table to Die mounting face)(mm)	Nominal Force (kg)	Powerpack motor	Overall Size (L X B X H) mm
RH200	Hydraulic	75	10	150	2000	3HP/1450 RPM/440V/ 3Ph	1025 X 675 X 1500

MARKING CAPACITY (IN MILD STEEL)	4 Lines of 6 mm Characters, 6 Lines of 6 mm Characters, 8 Lines of 3 mm Characters
DIE SLIDE STROKE	10 mm
DAYLIGHT	285 mm
THROAT	90 mm
OPEN BACK	Permits Marking of Long Bars
OPEN DISTANCE	180 mm Between Up-Rights
OUTPUT	Upto 600 Nos. per hour depending on Length of stroke and shape of component
TABLE SIZE	250 X 200 mm.
TABLE SIZE	10 mm Hydraulically, 110 mm by handwheel.
TABLE PRESSURE	1T to 4T
FLOOR AREA	2000 X 2000 mm
HEIGHT	1500 mm
NET WEIGHT	850 kg
MOTOR	3HP, 1500rpm, 440 V, 3-Phase, 50 Cycles
PUMP	10 Litres / Min
HYDRAULIC TANK	75 Litres.

APPLICATIONS

Automotive Axles, Crankshafts

Steel Bars, Tubes, and Rods

Railway Parts

Oil & Gas Pipes

Forgings and Castings



Forbes & Company Ltd.

CORPORATE OFFICE

Forbes Building, Charanjit Rai Marg,
Fort, Mumbai – 400001
T: +91 022 69138900

FACTORY

B-13, MIDC, Waluj,
Chhatrapati Sambhajnagar – 431133
T: +91 240 2553421 / 22

sales@forbes.co.in | www.forbes.co.in

CIN: L17110MH1919PLC000628

