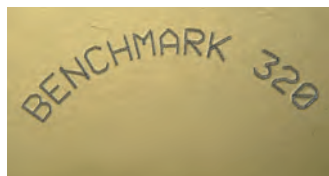


The **BenchMark® 320** is an extremely versatile yet economically priced benchtop marking system. It offers a generous 4" x 6" (100mm x 150mm) marking window large enough to satisfy almost any application. And its unique marking arm design is extremely convenient for parts loading and unloading as well as marking pattern design. The system is self-contained with compact controller and rugged extruded aluminum mounting post and base.



"I want to thank TELESIS for manufacturing a product that performs as well in real life as it states in your literature. Our new BenchMark® 320 Marking System from TELESIS has performed above our expectations since putting it into service. The BenchMark® 320 greatly simplified our identification tag printing process and provided Krispy Kreme with "just in time" tag production capabilities. If you are looking for high quality, flexibility and reliability in permanent marking equipment, TELESIS has the solution."

Jeff Renz, Krispy Kreme

FEATURES

- High quality, permanent, programmable marking on a wide range of materials — from soft plastics to hard metals up to Rc60
- Large 4" x 6" (100mm x 150mm) marking window
- Marking arm allows clear access for loading and unloading of parts
- Electromechanical marking pin eliminates the need for air supply
- Marks up to 5 characters-per-second
- Automatically generates serial numbers, as well as date, time and shift codes
- Compact, convenient controller with membrane keyboard and LCD display — no PC required

OPTIONAL ACCESSORIES

- Rotary fixture for marking circumferences of cylindrical parts
- Bar Code Scanner for automatic data entry
- Start-Print footswitch and pushbutton station
- Logo/Font design software package for design of custom fonts or logos
- PC-Based Upgrade Utility available FREE from www.telesis.com for easy software upgrade
- PC-Based Pattern Back-up Utility available FREE from www.telesis.com
- **Benchmark® 320+** version with enhanced communications capabilities
- **Benchmark® 320M** system with Windows based **Merlin® III** software available (see page 31)



QR Code Web Page Product Link

DATA MATRIX™ 2-D Code Marking Capability
Meets all Department of Defense UID Requirements
and other industry standards