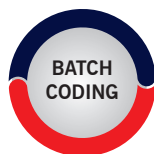


**BRADMA DIE HARD INTERCHANGEABLE
STEEL TYPES (ISTs)**



- Perfect for composing multi character data.
- Suitable for part numbering, batch & date coding on Steel, Aluminium, Brass, Plastic, Paper etc.
- IST is made from high quality tool steel, letters and numbers are formed by unique cold forming process.
- Sets are available with or without holder.

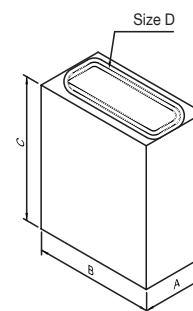
MARKET SEGMENT



STANDARD FOUNT SETS

Alpha-Numeric Set - With OR Without Holder

Bradma Type Code No.	Character Size D Mm	Type Size			Bradma Fount Set Code No.		Number of Types In Set	Number of Spacers Set	Bradma Hand Holder Code	Bradma Hand Holder Capacity
		A MM	B MM	C MM	With Hand Holder	Without Hand Holder				
T 010	1.00	1.00	8.00	25.00	112BH010	112B010	100	12	8 H 20	20
T 062	1.59 (1/16")	1.59	3.18	15.88	112BH062	112B062	100	12	125H750	12
T 020	2.00	2.00	8.00	25.00	112BH020	112B020	100	12	8 H 25	12
T 093	2.40 (3/32")	2.40	6.35	19.05	112BH093	112B093	100	12	250H1000	10
T 030	3.00	3.00	8.00	25.00	112BH030	112B030	100	12	8H25	8
T 125	3.18 (1/8")	3.18	6.35	19.05	112BH125	112B125	100	12	250H1250	10
T 040	4.00	4.00	8.00	25.00	112BH040	112B040	100	12	8H40	10
T 187	4.76 (3/16")	4.76	7.94	19.05	112BH187	112B187	100	12	312H1250	6
T 050	5.00	5.00	8.00	25.00	112BH050	112B050	100	12	8H40	8
T 060	6.00	6.00	8.00	25.00	112BH060	112B060	100	12	8H40	6
T 250*	6.35 (1/4")	6.35	9.53	19.05	112BH250	112B250	100	12	375H1500	6
T 080*	8.00	8.00	14.00	25.00	66BH080	66B080	60	6	14H60	7
T 375*	9.53(3/8")	9.53	15.88	25.40	66BH375	66B375	60	6	625H2250	6
T 100*	10.00	10.00	14.00	25.00	66BH100	66B100	60	6	14H60	6
T160*	16.00	12.00	20.00	30.00	-	-	-	-	-	-



Items with codes marked as * are made to order

Number Set Without Holder

Bradma Type Code No.	Character Size D Mm	Type Size			Bradma Fount Set Code No.	Number of Types In Set	Number of Spacers Set
		A Mm	B Mm	C Mm			
T 062	1.59 (1/16")	1.59	3.18	15.88	56 BN 062	50	6
T 020	2.00	2.00	8.00	25.00	56 BN 020	50	6
T 093	2.40 (3/32)	2.40	6.35	19.05	56 BN 093	50	6
T 030	3.00	3.00	8.00	25.00	56 BN 030	50	6
T 125	3.18 (1/18")	3.18	6.35	19.05	56 BN 125	50	6

COMPOSITION OF 112 TYPES SET (FOR UPTO 6.35 OR 1/4")

A	A	A	B	B	C	C	D	D	E	E	E	E	F	F	G	G	H	H	I
I	I	J	J	K	K	L	L	L	M	M	N	N	N	O	O	O	P	P	Q
R	R	R	S	S	S	T	T	U	U	U	V	W	W	X	X	Y	Z	&	/
/	-	-	1	1	1	1	2	2	2	2	3	3	3	4	4
4	4	5	5	5	6	6	6	7	7	7	8	8	8	9	9	9	0	0	0
SP	SP	SP	SP	SP	SP	SP	SP	SP	SP	SP									



Corporate Address:
Forbes & Company Ltd.
Forbes' Building, Charanjit Rai Marg, Fort, Mumbai - 400 001,
Maharashtra, India. Telephone: +91 22 61358900

For enquiry: sales@forbes.co.in For feedback: feedback@forbes.co.in Website: www.forbes.co.in

Factory Address:
Forbes & Company Ltd.
B-13, MIDC, Waluj, Chhatrapati Sambhajnagar – 431133
Telephone: +91 240 2553421



**BRADMA DIE HARD INTERCHANGEABLE
STEEL TYPES (ISTs)**

COMPOSITION OF 112 TYPES SET (FOR UPTO 6.35 OR 1/4")

A	B	C	D	E	F	G	H	I	J	K	L	M	N	O
P	Q	R	S	T	U	V	W	X	Y	Z	1	1	1	2
2	2	3	3	3	4	4	4	5	5	5	6	6	6	7
7	7	8	8	8	9	9	9	0	0	0	/	-	.	.
SP	SP	SP	SP	SP	SP									

- Suitable for part numbering, batch & date Coding, etc. on Steels, Casting, Forgings, Aluminium, Brass, Plastics, Paper.
- Types made from High Quality Tool Steel
- Letters and Numbers formed by unique Cold forming process for longer tool life
- Dull Nickel plated for rust free longer shelf life.
- Bevel Angles, Character Depth & "Bradma" Calligraphy to maximize type life
- Sets are available with or without Holder.
- All dimensions are to very close tolerances, for the clearest uniform impression in perfect alignment

WHAT ARE INTERCHANGEABLE STEEL TYPES

- Steel Types which can be composed like Printer's Types.
- Made of Alloy Steel.
- Hardened and Tempered to give
 - a) Toughness
 - b) Wear Resistance
- Plated to Resist Rust.
- Character Accurately Positioned on Shank.
- Overall Length Controlled-Uniform Depth
- Can be easily Composed-Uniform Depth.
- Can be easily Composed in Holders Suitable for Hand or Machine Operation

COMPOSITION OF 66 TYPES SET (FOR ABOVE 6.35 OR 1/4")

0	0	0	0	0	0	0	0	0	0	0	1
1	1	1	1	2	U	2	2	2	2	2	3
3	3	3	3	4	4	4	4	4	4	4	5
5	5	5	5	6	9	6	6	6	6	7	7
7	7	8	8	8	8	9	9	9	9	9	9
SP	SP	SP	SP	SP	SP	SP					

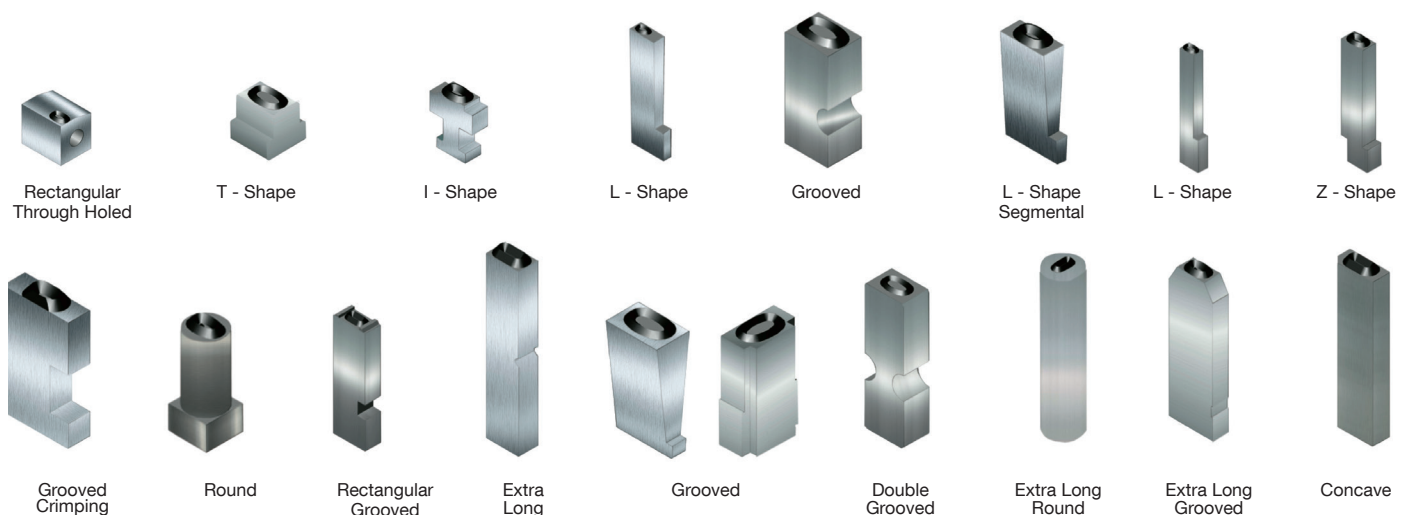
MARKING ELEMENTS (STEEL TYPES - RECTANGULAR BODY)

Special Types - They can be developed if:

- Calligraphy & Character Sizes are from our Standard Range.
- Manufacture of Special Types is Compatible with our Type Forming Process.
- Volumes are sufficiently large.

BRADMA SPECIAL INTERCHANGEABLE TYPES

- Segmental, Radial, Grooved and Stepped Types for special applications
- Low Stress Types
- Concave or Convex Types
- Types with Special Calligraphy design
- Types for Hot Stamping applications
- Special Types for Blister Packing, Cartonators, Collapsible Tubes, Crimping, Sachets, Tetra packs etc.



Corporate Address:
Forbes & Company Ltd.
Forbes' Building, Charanjit Rai Marg, Fort, Mumbai - 400 001,
Maharashtra, India. Telephone: +91 22 61358900

For enquiry: sales@forbes.co.in **For feedback:** feedback@forbes.co.in **Website:** www.forbes.co.in

Factory Address:
Forbes & Company Ltd.
B-13, MIDC, Waluj, Chhatrapati Sambhajnagar - 431133
Telephone: +91 240 2553421

